



# CATALOGUE 2026

**CREST**  
DUTCH MACHINERY

**BUILT FOR  
INDUSTRIAL  
PRODUCTION.**

**ENGINEERED  
FOR YOUR REALITY.**

Crest Dutch Machinery designs and builds industrial laminators, cutters, and winding systems that deliver repeatable quality at scale. With over four decades of know-how and in-house engineering, we turn complex production demands into robust, operator-friendly machines that simply keep running.

From proven standard models to high-end, fully custom lines, we align our solution to your process; roll-to-roll, roll-to-sheet, sheet-to-sheet or sheet-to-roll and to your materials, from foams and plastics to glass, metals, rubber and more.

## **WHAT SETS CREST APART**

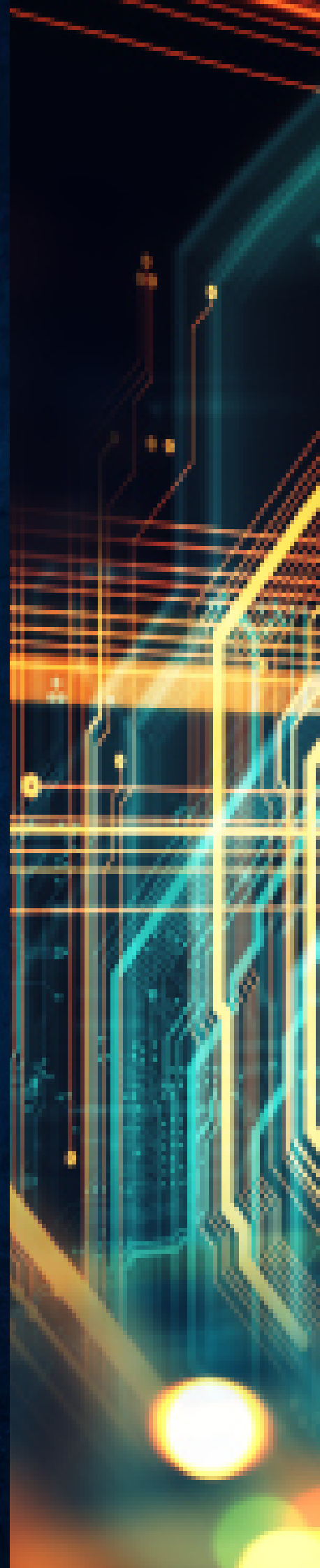
**Tight, consistent results** in laminating, slitting, cross-cutting and die-cutting, supported by precise web-tension control and accurate alignment throughout the line.

**Industrial throughput & uptime** with 24/7 inline configurations, automated feeding, in-process cross-cutting, stacking, and smart changeovers that minimize downtime;

**Cleanroom-ready options** and specialized handling for advanced applications where process integrity and contamination control matter;

**Safety and ease of use** baked in: intuitive HMI, ergonomic access, and service-friendly design that keeps operators confident and production stable;

Crest equipment powers manufacturing across automotive, glass, electronics/flat displays, traffic signage, converting and broader industrial markets. Whatever your tolerance window, material stack-up or cycle-time target, we engineer the most direct path from concept to consistent production.



# MACHINES

## Laminating

---

- ES-1600	page 04
- TS-1600/2100	page 04
- BL-2500	page 04
- Liquid Silicone Laminator	page 05
- Large Nip Laminator	page 05
- Laboratory Laminator	page 05
- Glass Laminator	page 06
- Automated Sheet Laminator	page 06
- Laminator Fly Cutter	page 06
- Laminator Slitter Winder	page 07
- Laminator Slitter	page 07
- R2R Laminator Slitter	page 07
- Inline Laminator	page 08
- Cross Cut Laminator	page 08
- Enclosure Laminator	page 08
- De-Laminator	page 09
- Mirror Laminator	page 09
- Glass Protection Laminator	page 09
- Flatbed Laminator	page 10
- Flatbed Applicator	page 10
- Laminator De Curler	page 11
- Multi Strip Laminator	page 11
- Face Mask Laminator	page 11
- Verical Laminator	page 12
- Full-Auto Sheet Laminator	page 12
- Flexible Display Laminator	page 12
- Barrier Film Laminating Line	page 13

## Cutting

---

- Rotary Die Cutter	page 14
- Roll Sheet Cutter	page 14
- Multi Wall Cutter	page 14
- Slitting Cross Cutter	page 15
- Heavy Duty Board Cutter	page 15
- R2R Perforator Cutter	page 15

## Winding

---

- Jumbo Roll (un)Winder	page 16
- Heavy Duty (un)Winder	page 16
- Coreless Winder	page 16
- Motorized Roll Feeder	page 17
- Take Up Unit	page 17
- Auto Splicing Turret Winder	page 17

## Others

---

- Roll Loader	page 18
- Web Embosser	page 18
- Hot Stamping Machine	page 18

## License Plate Production Line

---

- Hologram Laser Marking Unit	page 19
- Automatic Stretch Laminator	page 19
- License Plate Production Line	page 19

## Services

---

- Service Agreements	page 20
- Spare Parts	page 21

ALL OUR MACHINES CAN BE CUSTOMIZED  
AND PROVIDED WITH PERIPHERALS

# LAMINATING machines

## ES-1600

The versatile ES-1600 laminator is designed for high-quality laminations, panel mounting of images, and print encapsulation. It offers adjustable temperature and speed settings, making it easy to achieve the desired results. The machine includes user-friendly features like a rotatable control panel and a foot pedal for start/stop. Available in both 2-roller and 4-roller versions, the ES-1600 ensures seamless finishes and can be customized to meet specific needs.



## TS-1600/2100

The TS-1600/2100 is a top-tier laminating machine renowned for its high-pressure capabilities and specially selected rubber compound rollers. This unique combination ensures flawless lamination, even with the most challenging films, eliminating silvering and maintaining exceptional quality and contrast. Widely used for traffic signs, the TS-1600/2100 is also perfect for any application demanding the highest standards of quality. Focus on precision and performance by using this quality machine.

## BL-2500

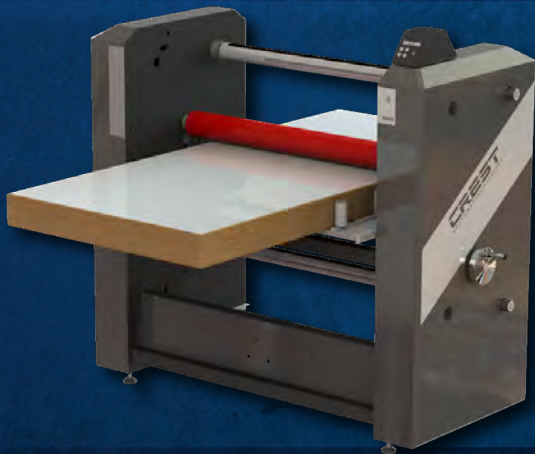
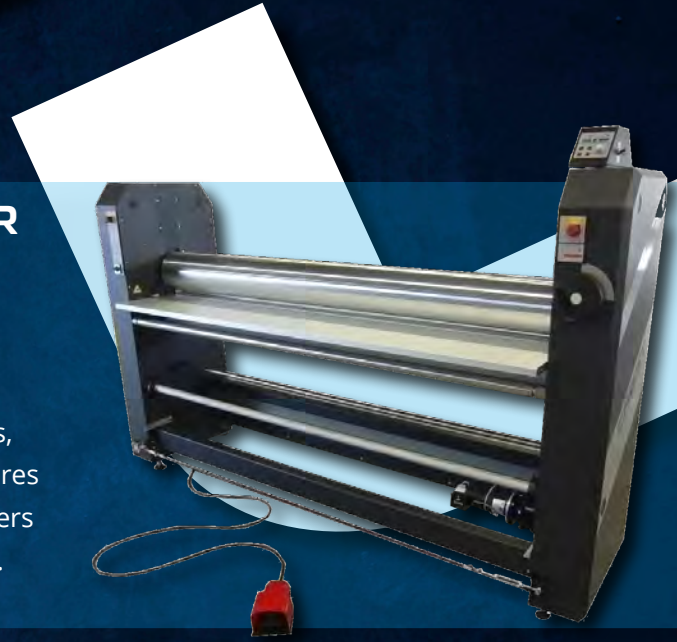
Introducing the BL-2500, a robust heavy-duty laminator with an impressive 2500mm working width. Its reinforced frame and high-quality components ensure precision without compromising on size. With easy-to-use controls and versatile features like double-sided laminating and removable tables, the BL2500 delivers top-notch performance and reliability for all your laminating needs.



# LAMINATING machines

## LIQUID SILICONE LAMINATOR

Our Liquid Silicone laminator is designed for precise face mounting, bonding prints to acrylic or glass with optically clear silicone adhesive. This process enhances the visual quality of the image, providing a smooth, durable finish. Ideal for galleries, commercial displays, and art presentations, our laminator ensures a professional, bubble-free result. Reliable and efficient, it delivers consistent, high-quality outcomes for all your lamination needs.



## LARGE NIP LAMINATOR

The user-friendly Large Nip Laminator has been developed for professional and industrial applications in all areas involved in the production, manufacturing and processing panels of all kinds up to 130mm in thickness! The proven technology with dry laminating of double-sided adhesive foils that comes off the roll does the job perfectly and in the shortest possible time. It can laminate panels (for example doors) on either one side or both sides simultaneously, offering flexibility to meet diverse production needs.

## LABRATORY LAMINATOR

The Laboratory Laminator is a versatile machine ideal for both pilot production and regular manufacturing work. With its external and internal heating sources, adjustable high lamination pressure, and large roll opening, it can handle a wide range of materials with varying parameters. This flexibility makes it perfect for experimenting with new products as well as scaling up for full production runs. Slitting, edge trimming, cross cutting, roll to sheet, digital setup with recipe function and tailor made SCADA.



# LAMINATING machines

## GLASS LAMINATOR

The Crest Glass Panel Laminator is a versatile machine designed for efficient glass lamination. It can handle both double-sided and single-sided lamination, applying a protective film with precision. The machine features an automatic cross-cutting system that separates the laminated glass sheets after processing, streamlining production. With its adjustable speed settings and user-friendly Human-Machine Interface (HMI), operators can easily control the lamination process.



## AUTOMATED SHEET LAMINATOR



The Crest Sheet Laminator is an advanced machine designed to laminate films onto various materials, such as paper and plastics. It stands out due to its fully automated features, including a pick-and-place unit, adjustable feeder, and a user-friendly touch screen interface. The machine is adaptable to different production needs, offering customization options to suit specific requirements, making it a versatile tool for high-quality laminating tasks.

## LAMINATOR FLY CUTTER

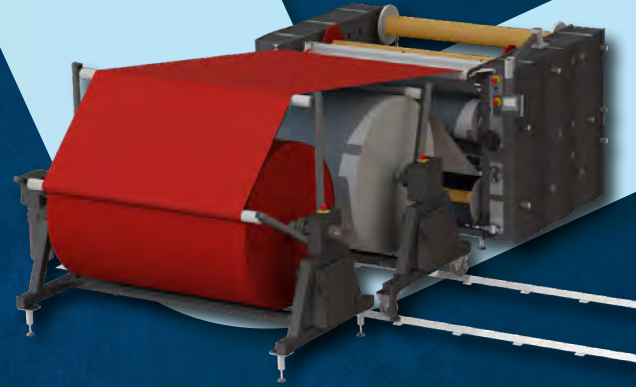
The Crest Laminator Fly Cutter is designed for hot and cold lamination, handling single or double-sided applications with ease. Its smart on-the-fly cutting module ensures uninterrupted production by automatically separating laminated sheets. Suitable for both soft and hard materials, it offers high-speed processing and supports sheet-to-sheet and roll-to-sheet operations. This machine is ideal for various materials, including insulation boards, wood fiber, and metal.



# LAMINATING machines

## LAMINATOR SLITTER WINDER

The Crest Winder Slitter Laminator is designed for laminating foam onto a polyester base and slitting it into wide or narrow rolls with multiple slitting knives for customized production. It features dual laminating rollers and a smart PLC system for efficient, user-friendly operation. In addition to polyester, it is ideal for laminating polyester, adhesives, paper, non-wovens, and more. Its flexibility in roll widths makes it a versatile tool for various material processing tasks.



## LAMINATOR SLITTER

The Crest Laminator Slitter laminates adhesives and films onto rubber and foam materials, slits them to desired widths, and is specialized for unwinding and rewinding jumbo rolls with automatically controlled winding tensions and speeds. It features a rotary carousel for quick material switching, a lifting system for safe roll changes, and a dual laminating process with adjustable heating.

The machine's precise slitting capabilities, automatic material alignment, and customizable settings ensure high-quality output for diverse production needs.

## R2R LAMINATOR SLITTER

The Crest R2R Laminator Slitter is a specialized machine designed for laminating and slitting printed PET plastic onto self-adhesive PE foam or thin PVC. It features adjustable laminating rollers, heatable up to high temperatures, and a pneumatic shear-cut slitting system for cutting the toughest materials. The machine stands out due to its automated web tension regulation, precise slitting capabilities, and user-friendly HMI controls, making it ideal for high-quality, precise roll-to-roll lamination and slitting processes in industrial settings.



# LAMINATING machines

## INLINE LAMINATOR

The Inline Laminator by Crest is an advanced machine designed for seamless integration into continuous production lines. It laminates materials on one or both sides with precision, ensuring uninterrupted 24/7 operation thanks to its four-cassette system. As one cassette depletes, another automatically takes over, minimizing downtime. The machine emphasizes efficiency, sustainability, and ease of use with features like operator visibility and precise heat application, making it ideal for high-volume manufacturing environments.



## CROSS CUT LAMINATOR

This laminator with cross-cutting system is a specialized machine designed for applying self-adhesive layers to different foam materials in a roll-to-roll process. It features integrated lamination and cross-cutting functionalities, allowing for precise material handling and processing. The machine's dual winding positions, equipped with Autogrip axes, facilitate seamless material winding and unwinding. This machine is notable for its high precision, reliability, and user-friendly interface, making it ideal for industrial lamination processes.

## ENCLOSURE LAMINATOR

Our advanced Enclosure Laminator is fully FDA-approved and designed for high-demand cleanroom operations. Optimized for vaccine enclosures, it ensures precise processing of semi-vulcanized rubber, delivering seamless lamination and cutting for efficient, high-quality production.



# LAMINATING machines

## DE-LAMINATOR

The Full-automatic De-laminator excels in high-volume production, automating the separation of protective films from plastic sheets with minimal manual input. It features automated feeding, precise positioning via a vacuum conveyor, and a tape applicator followed by a separation knife. Post-delamination, sheets are cleaned with ionized air and a cleaning roller for flawless results. Capable of handling over a thousand sheets daily, this machine enhances efficiency and maintains quality with integrated workflow automation.



## MIRROR LAMINATOR LINE

The Crest Mirror Laminator specializes in adhesive lamination for spherical shapes, making it unique in its field. Its advanced precision laminating rollers and high-precision laser technology ensure flawless application on curved and spherical surfaces, which are particularly challenging to handle. This capability is crucial for industries requiring perfect alignment and adhesion on non-flat surfaces, such as in the production of specialized optics or automotive components. The machine's cleanroom compatibility and efficient waste management further enhance its value.



## GLASS PROTECTION LAMINATOR

The Crest Glass Protection Laminator, specifically designed for automotive use, applies protective foil to curved glass with precision. Our expertise ensures flawless lamination without air entrapments or creases, using best-quality components and advanced servo-driven web tension control. The fully automated machine can handle various glass variants, and its Pick & Place unit ensures exact alignment. Automation and minimal downtime make it user-friendly for operators, solidifying our leadership in advanced lamination technology.



# LAMINATING machines

## FLATBED LAMINATOR

The Flatbed Laminator is designed for applying adhesive onto PET pinching plates. This machine features an automated laminating module that moves over a flatbed, ensuring precise adhesive application. Key features include adjustable laminating speed, a manual adhesive cutting provision, and height adjustment for varying plate thicknesses. Its unique design, with two unwind positions and manual slit knife, offers flexibility and precision. The machine is equipped with essential safety features like emergency stops, making it both efficient and secure for industrial use.



## FLATBED APPLICATOR

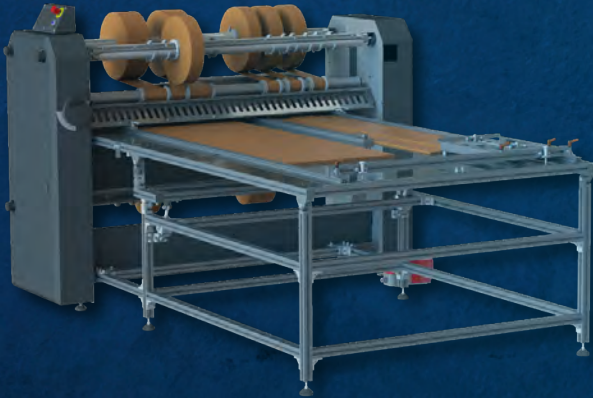
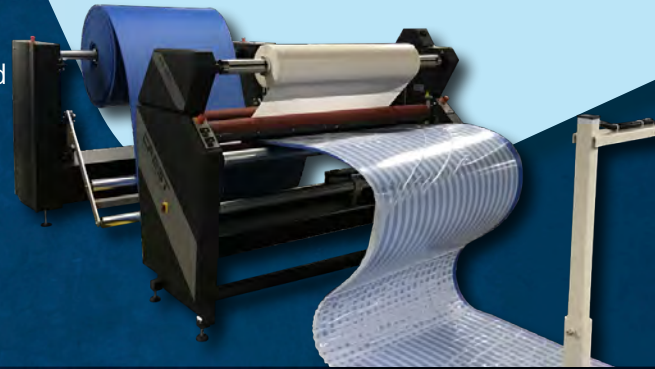
This applicator is a robust and highly efficient solution designed to improve productivity in your workflow. Its rigid construction ensures durability, while the lowmaintenance design minimizes downtime. With a simple, fast, and efficient operation, the applicator provides exceptional performance, handling materials up to 70 mm thick with precision. Perfect for professionals seeking reliability and speed in their application processes.



# LAMINATING machines

## LAMINATOR DE-CURLER

Specially designed to straighten materials that have developed a natural curve or bend due to being stored in rolls, especially different foam materials. These materials often need to be flattened before they can be further processed or laminated in order to achieve proper lamination results. The machine not only flattens these curved materials but also laminates them with film or tape in a single, efficient operation. This capability ensures a smooth and flat final product, which is crucial for applications like printing, packaging, or adhesive-backed materials. This machine is installed



## MULTIPLE STRIP LAMINATOR

This is a specialized machine designed for automating the process of applying adhesive tape, fiber tape, and labels to foam materials.

It integrates multiple production steps, such as double-sided lamination and precise cutting, into a single, streamlined operation. This machine is notable for its ability to handle various product configurations with high precision, supported by customizable settings and a user-friendly touchscreen interface, making it an efficient tool for manufacturing specific foam-based products.

## FACE MASK LAMINATOR

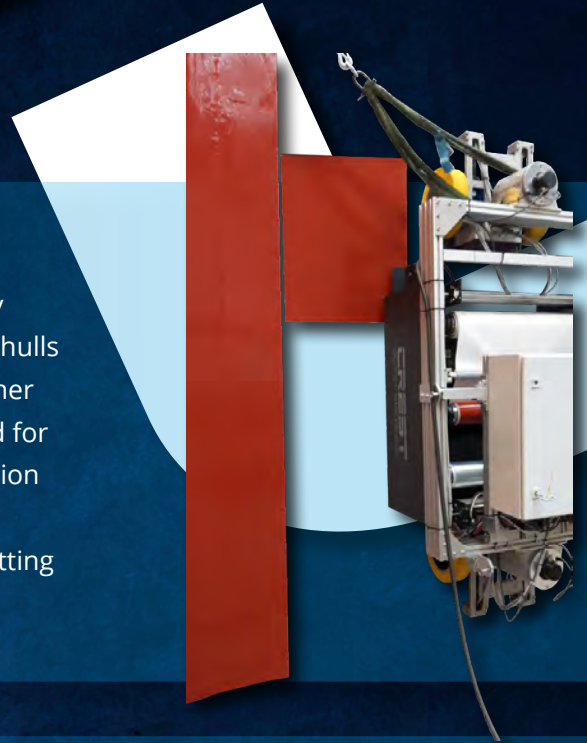
Designed for the efficient production of face masks, this machine unwinds, laminates, and buffers materials, preparing them for further processing in the production line. The machine is equipped with pneumatic clamps for material handling and a sophisticated lamination station with temperature control. Its modular design allows for the seamless integration of various materials. What makes it special is its precision, modularity, and ability to handle multiple layers of material simultaneously, ensuring high-quality production standards.



# LAMINATING machines

## VERTICAL LAMINATOR

The Vertical Laminator is a groundbreaking machine specifically designed for the vertical application of self-adhesive foil on the hulls of large industrial vessels, a capability that sets it apart from other machines in the industry. This feature makes it especially suited for laminating at the waterline of ships, where precision and adhesion on curved, vertical surfaces are crucial. Its advanced design, including precise laminating rollers, heating units, and a kiss-cutting system, ensures flawless application even on complex, curved vertical surfaces.



## FULL-AUTO SHEET LAMINATOR

The Full-Auto Sheet Laminator automates the process of applying protective film to sheets. This machine efficiently handles material alignment and lamination using advanced pick and place units that precisely position sheets and film. The process begins by loading sheets on the infeed table and a film roll onto the designated unwind position. The film is then unwound, cut to the required size, and aligned on a vacuum conveyor. The pick and place units position the sheets and film for lamination, ensuring accurate alignment. Once laminated, the sheets are automatically transported and stacked for collection, optimizing production efficiency without the need for additional lifting equipment.



## FLEXIBLE DISPLAY LAMINATOR

The Flexible Display Laminator by Crest is a specialized machine which takes part in the production of rollable screens used in e-readers and smartphones. It features a fully automated process in a clean room environment, ensuring precision and minimal contamination. The machine uses a robotic arm, vacuum beds, laminating rollers, and laser cutters to laminate flexible displays with printed electronics. It also integrates safety features like sensors and electronic locks to maintain operator safety and process integrity. This machine is vital for advancing flexible display technology.



# LAMINATING machines

## BARRIER FILM LAMINATING LINE

A food-grade, high-precision line for multilayer laminated barrier films used in flexible packaging. It unwinds PE / metallised PET / PE webs and combines all layers at high speed in a single-pass laminating process.

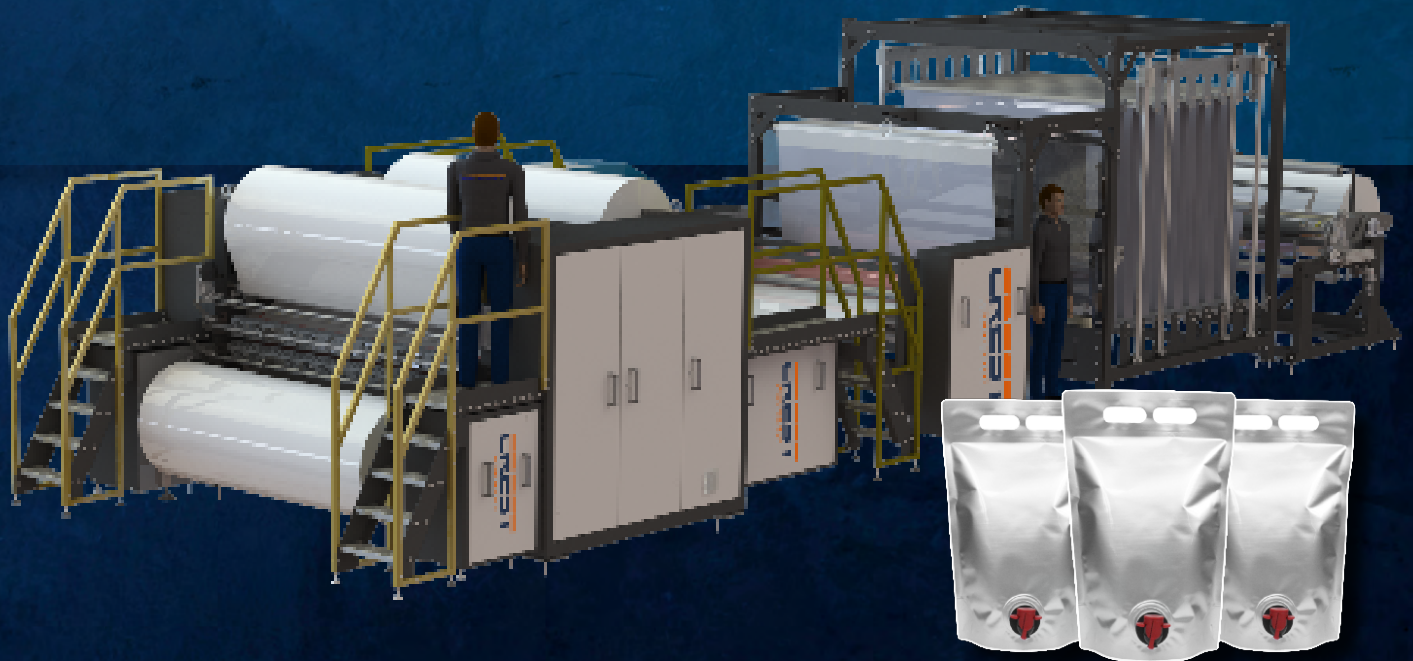
Infrared pre-heating and heated laminating rollers activate the hotmelt for strong, consistent adhesion.

Simultaneous lamination of all layers up to 2,200 mm working width.

Water-chilled rollers cool and stabilise the web, ensuring flatness and uniform film properties.

Inline width slitting and a buffer section for length cutting enable uninterrupted laminating during fully automatic roll changes at the turret winder.

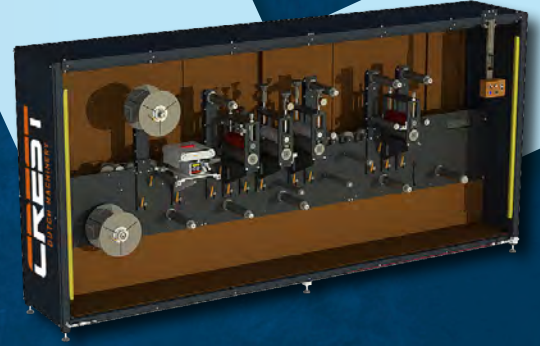
The dual-position turret winder splices to a new core and cuts off the finished roll, maintaining precise tension control.



# CUTTING machines

## ROTARY DIE CUTTER

The Crest Rotary Die Cutter delivers high-performance winding, laminating, and cutting for materials like plastic, paper, foam, rubber, foil, and adhesives. Its modular design supports interchangeable units, including Wind & Unwind, Laminating, Stacker, and Die-Cut, ensuring flexibility. The open construction allows easy setup, while full enclosure prevents dust intrusion for smooth production. It offers two drive options: a chain drive or a Servo-controlled system for high-demand processes, ensuring precision and adaptability.



## ROLL SHEET CUTTER

The Roll Sheet Cutter is expertly crafted for the Sign and Converting industries, handling an extremely wide range of materials, transforming rolls into precise sheets. It boasts four air-controlled cold crush-slitting knives and a shear cross-cutting system, with optional hot slitting and hot crosscutting capabilities. The machine includes a skew function for fine-tuning the alignment of the cross-cutting line and features a rotation selection unwind, ensuring exceptional accuracy and versatility for diverse cutting applications.



## MULTI WALL CUTTER

The Multiwall Cutter is designed to cut, not saw, polycarbonate multiwall panels, ensuring clean, burr-free edges for a superior finish. This method keeps the workspace free from dust and debris, enhancing safety and efficiency. The machine is available in both horizontal and vertical configurations and offers the option to laminate panel edges with a membrane foil for added protection. Combining precision, cleanliness, and robustness, it is ideal for industrial applications requiring high-quality cuts and a tidy workspace.



# CUTTING machines

## SLITTING CROSS-CUTTER

This is a machine designed for the efficient processing of different kinds of material. It unwinds large rolls of material, slits them into smaller strips, and rewinds these strips onto new rolls. This machine is particularly notable for its precision, handling materials with high accuracy, and its ability to adjust to different material types and thicknesses. A special winding shaft is integrated in the design of the machine to guarantee perfect winding of all rolls. Its safety features and user-friendly interface make it suitable for industrial environments, ensuring both high productivity and safety for



## HEAVY DUTY BOARD CUTTER

The Heavy Duty Board Cutter is a versatile machine designed for fast, accurate, and clean cutting of tough materials without generating dust, noise, or fumes. It can operate both horizontally and vertically, making it adaptable to different workspace requirements. The machine is powered by a robust motor and features a fast pneumatic clamping bar, ensuring efficient production cycles. Its precision and ability to handle a variety of materials make it a standout choice for high-quality cutting tasks.

## R2R PERFORATOR CUTTER

This converting machine is designed to cut or perforate foil into specific sizes, either as sheets or re-rolled foil. It uses an HMI panel for precise control and can automatically stop when a preset quantity is reached or the foil roll ends. What makes this machine special is that it is equipped with a flatbed die, allowing for easy cutting or perforating of various patterns. Additionally, the machine is versatile and comes with multiple safety features.



# WINDING machines

## JUMBO ROLL (un)WINDER

The Jumbo Roll Winder optimizes media handling with features like auto-tensioning, adjustable speed, and selectable winding direction. It efficiently winds rolls with precision, supporting various widths and weights up to 150 kg. Its advanced auto-tensioning system ensures consistent quality, while the easy-to-use auto-grip shaft simplifies loading and unloading. With its versatility and customizable options, this machine is ideal for enhancing productivity in media processing environments.



## HEAVY DUTY (un)WINDER

The Heavy Duty Winder is engineered for efficient handling, winding, and unwinding of large and heavy rolls, supporting weights up to 500 kg. Suitable for materials like foils, films, and textiles, its robust frame and stable metal structure ensure easy maneuverability. Equipped with safety chucks, pneumatic clamping shafts, and a diameter sensor for precise winding control, it handles high torques with exceptional stability and performance. Customizable for different material sizes, this machine is built for reliable and efficient operation.



## CORELESS WINDER

An innovative machine that efficiently winds rubber and other materials without a core, reducing waste and improving sustainability. Its precise winding system, with advanced automation, buffer, and crosscutting units, ensures smooth, high-quality rolls. Anti-stick and high-friction rollers allow easy handling of sticky or delicate materials. Ideal for a wide range of applications, from EPDM roofing and pond liner to wallpaper, it covers both heavy-duty and delicate needs. The semi-automatic packaging process streamlines production, and a feasibility test can be conducted to assess material suitability and implementation.



# WINDING machines

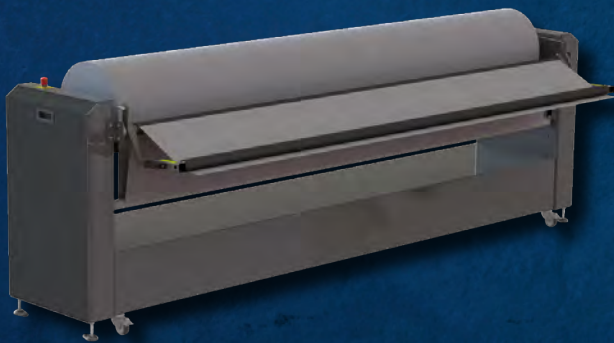
## MOTORIZED ROLL FEEDER

The Motorized Roll Feeder is a reliable solution designed to seamlessly integrate with cutting plotters or laser tables. It automatically adjusts material unwinding to match the needs of the connected machine, ensuring smooth and consistent feeding. With its user-friendly controls and sturdy construction, this feeder simplifies material handling and enhances workflow efficiency, making it an ideal choice for various production environments.



## TAKE UP UNIT

The Take Up Unit is designed for efficient and precise media handling, making it the ideal system integrator behind a cutting table to seamlessly take up material. Engineered to minimize tension during winding, it ensures smooth operation and optimal performance. Its robust frame and advanced safety features, including emergency stop buttons, provide secure and reliable use. The Autogrip shaft allows for easy media installation, while the adjustable winding speed enhances versatility for various industrial applications.



## AUTO SPLICING TURRET WINDER

Our Auto Splicing Turret Winder is designed to streamline your production process by enabling quick and efficient roll changes without stopping. It offers reliable performance with precise tension control, helping to reduce waste and improve overall productivity. Suitable for various industries like packaging, printing, and converting, this machine is built to meet your specific needs, ensuring a smoother and more efficient workflow. It's a practical solution for businesses looking to optimize their operations.



# OTHER machines

## ROLL LOADER

The Crest Roll Loader is designed to efficiently transport, load, and unload heavy rolls. Its low frame design and compact size allow it to fit through standard doorways and navigate tight spaces with ease. The machine is equipped with an automatic brake mechanism, ensuring safe and controlled operation. Its versatility includes easy swapping between scale and mandrel, making it adaptable for various tasks. The Roll Loader is ideal for environments that require frequent handling of large, heavy rolls with minimal physical strain.



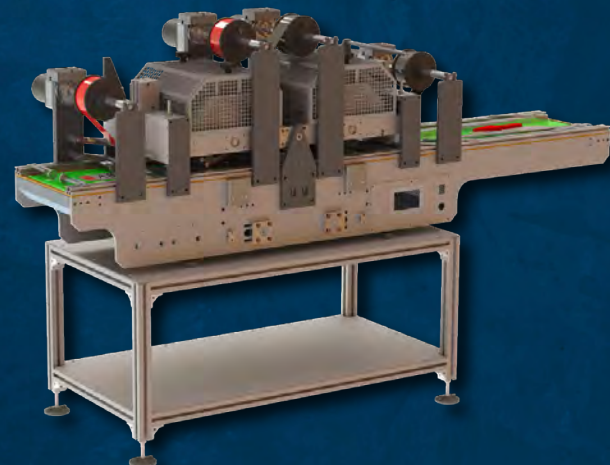
## WEB EMBOSSE

Redefining precision for medical waste packaging. Designed to master temperature dynamics and pressure calibration, our web embosser delivers flawless embossing, crucial for highly accurate patterns on materials used in vacuum-sealed medical waste bags. Additionally, depending on the embossing pattern, it offers versatility for decorative applications, including wood grain and stone textures, as well as technical films like smart glass. The machine can also be customized for other applications, such as perforation, making it a highly adaptable solution for various industries.



## HOT STAMPING MACHINE

The Hot Stamping Machine is designed for both stand-alone and automated production processes. It features adjustable rollers and customizable configurations, making it ideal for embossing, debossing, and multi-color hot stamping. With a user-friendly touchscreen, precise temperature controls, and adjustable belt speeds, it ensures high-quality results. The machine's adaptability, including options for multiple heated rollers and integration with external systems, sets it apart as a flexible solution for various stamping needs.



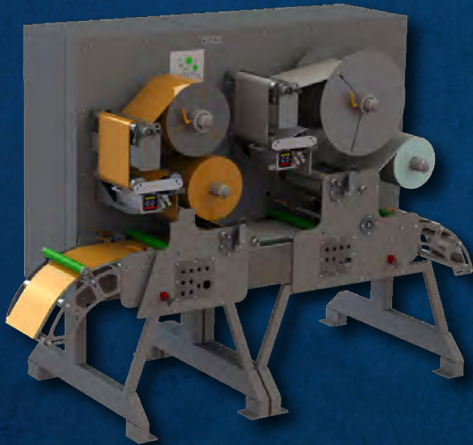
# LICENSE PLATE PRODUCTION LINE

## HOLOGRAM LASER MARKING UNIT

The standalone Hologram Laser Marking Unit with an integrated ink-jet printer is mainly designed for license plate production. It combines hologram stamping, laser marking, and inkjet printing capabilities, allowing it to apply security features like hologram logos, laser-etched registration numbers, graphics, and barcodes. What sets it apart is its modular design, enabling flexibility for different plate sizes and configurations. It operates fully automatically and can store and recall settings for various plate types, ensuring high-speed and accurate production.



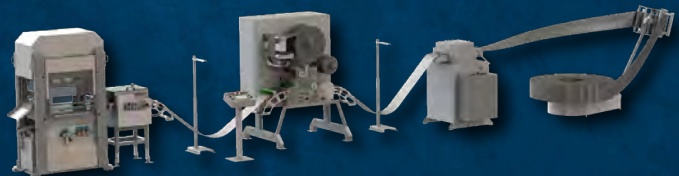
## AUTOMATIC STRETCH LAMINATOR



This machine is a high-end, automatic laminator designed for license plate production. It features advanced stretch-control and feeding capabilities, ensuring precise lamination of reflective and non-reflective sheeting. Its key strengths include servo-controlled operations, automated buffer-loop management, and a central touch-screen interface for easy monitoring and adjustments. The machine is built with top-tier components for durability and low maintenance, making it ideal for high-volume, accurate production. It seamlessly integrates with other production line components, enhancing overall efficiency.

## LICENSE PLATE PRODUCTION LINE

A high-precision laminating line for producing reflective metal license plates. It unwinds and flattens an aluminum web, then applies a reflective film with perfect alignment via a Laminator. The Infeeder positions the laminated strip for cutting, embossing, and shaping by a Press. Optional units like Punch, Heating, and Hologram enhance functionality, enabling customization such as holes or holograms for added security. The result is durable, reflective plates, ready for alphanumeric coding before vehicle mounting.



*This is just a small selection from our extensive range of high-quality machines for license plate production.*

## SERVICE AGREEMENT

Would you like fast and professional support from our service experts over the entire life cycle of your Crest product? Then a Crest service agreement is precisely the right thing for you. The all-round carefree package: the fixed annual sum enables you to plan the maintenance and operating costs. It includes:



### Telephone Hotline / Online Support

Telephone hotline or online support ensure fast error correction and reduce the costs for on-site visits. Operating or setting errors can be quickly identified and rectified, for example.



### Ethernet / Remote Support\*

More than two thirds of all service cases can be solved remotely through an Ethernet remote connection. With improved and/or new software we can support your machine's performance. You can always count on optimally trained and experienced service specialists.



### Periodic / Preventive Maintenance

Regular, on-schedule and plannable maintenance ensures a high level of availability, productivity and process reliability. You retain complete planning certainty due to fixed package prices or annual fixed prices. Optimally trained service engineers carry out the maintenance according to our specifications in the same way around the world, and document this with a maintenance checklist and a maintenance sticker. For this, we only use original maintenance parts which will continue to guarantee optimal operation.



### Priority Treatment

With a Crest service agreement you will be the first to be served. Under normal circumstances, within Europe, Crest has a response time of 48 hours. Worldwide it is 72 hours (weekend days excluded and availability of parts not considered).



### Discount on parts

You will receive a 10% discount on all materials used during a maintenance intervention. Also, charges for service labor beyond the annual service will be 10% lower than for customers without a service agreement.

*\* Ethernet remote support is only applicable to machines equipped with an extended PLC control system where Crest can access the machine control through a build-in communication module.*

# SERVICES

## Spare Parts

With our thoughtfully prepared Spare Part Kits, your machine will remain in the best possible condition and will allow for quick action in case of breakdowns and problems. Our Spare Part Kits are divided into three levels and are always defined machine-dependently. An indication of the kits may look as follows:



### BUDGET PACK

The budget pack is great for a “quick fix”. The parts are mostly simple (wear and tear) parts that can often be replaced by both the client and Crest.

- Fuses
- Hoses
- Switches
- Filters (when applied)



### STANDARD PACK

The standard pack, except for parts from the budget pack, contains mostly parts which are to be replaced or installed by Crest. Because these parts are in stock, rapid intervention can be achieved without reliance on component delivery times.

- All parts of the budget pack
- Timing belts and chains
- Bearings
- Heating elements (when applied)
- Sensors, encoders, etc.
- Knives



### PREMIUM PACK

Although these parts are not likely to break down, dependence on delivery times of six months or even more can be avoided by having these critical parts in stock. In addition, they serve as a backup if identical parts can no longer be ordered due to, for example, updated firmware or other modifications that make them incompatible.

- All parts of the standard pack
- Drive(s)
- Electrical parts: controllers/ drives, PLC parts, relays,pcb's, etc.
- (Laminating) Roller(s)
- Touchscreen panel

*\* Under normal circumstances, the respective Spare Part Kit costs stay within the indicative stated percentage of the retail value of the machine. Depending on the machine, the final price of the Spare Part Kit may vary, The percentage range therefore only serves as an indication.*



## Crest Dutch Machinery

Schoenerstraat 3  
8102 GW Raalte  
The Netherlands

+31 (0)572 34 50 50  
[info@crest.nl](mailto:info@crest.nl)  
[www.crest.nl](http://www.crest.nl)

**CREST**  
DUTCH MACHINERY